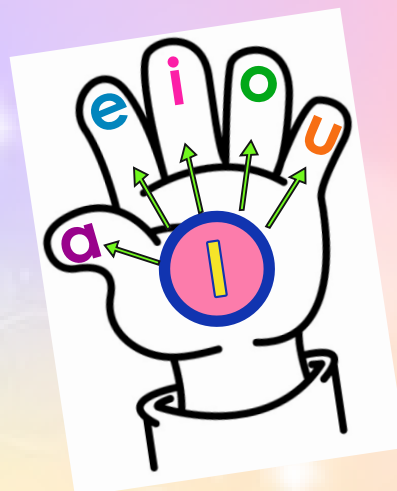


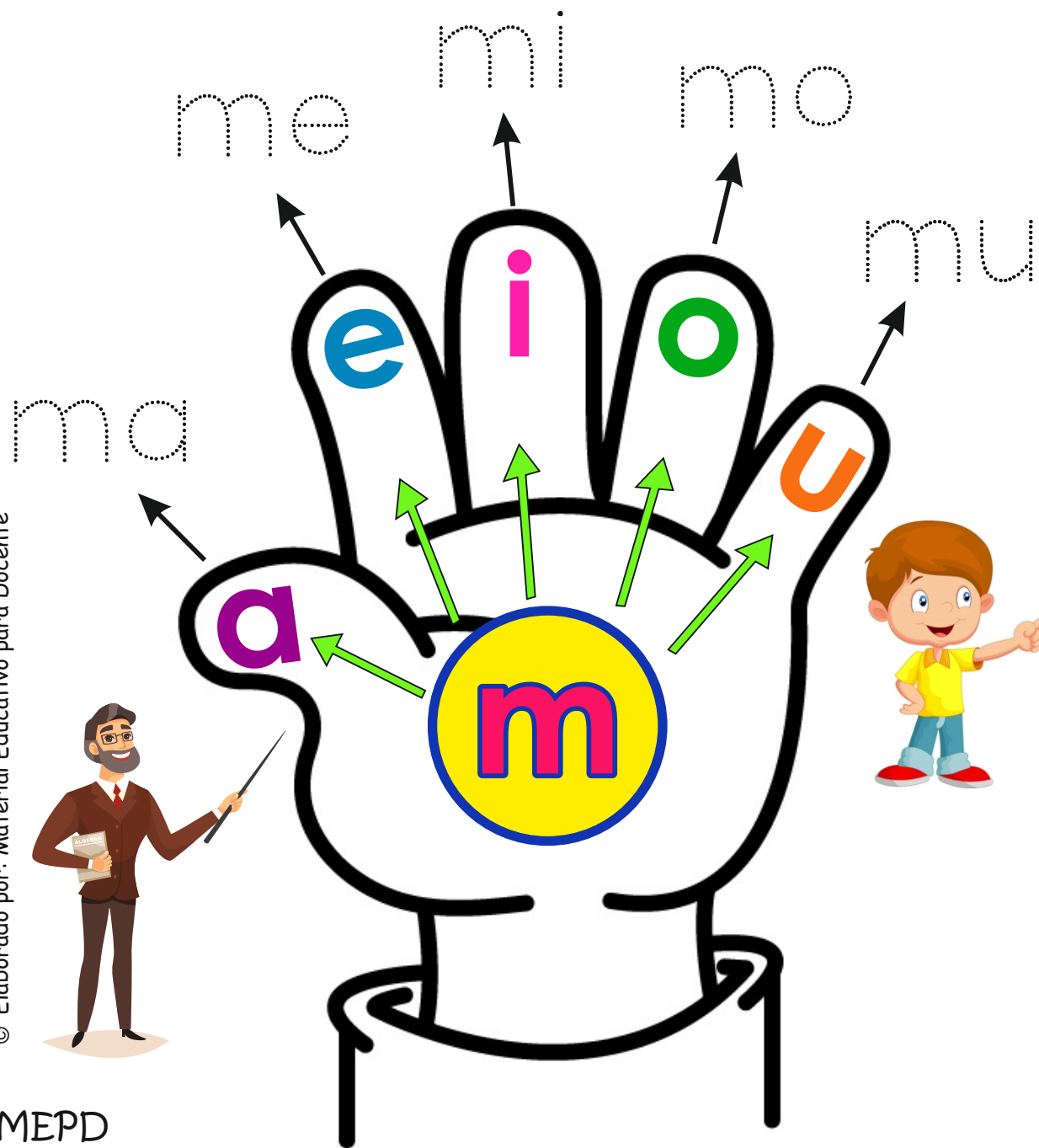
CARTELES

# SILABARIO

## Lectoescritura



Repasa y completa las sílabas



m = a =

m = e =

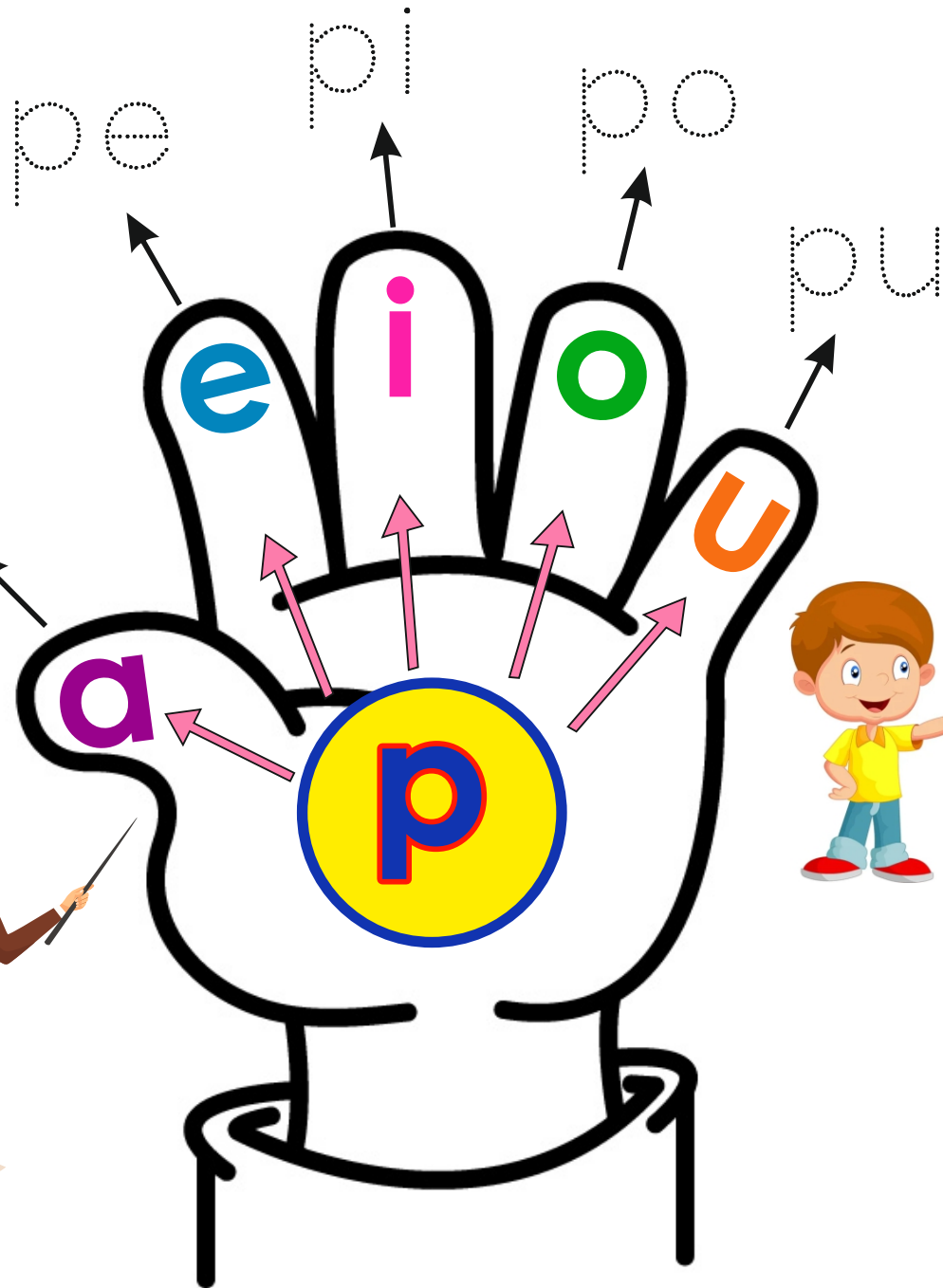
m = i =

m = o =

m = u =

Repasa y completa las sílabas

© Elaborado por: Material Educativo para Docente



**p** =

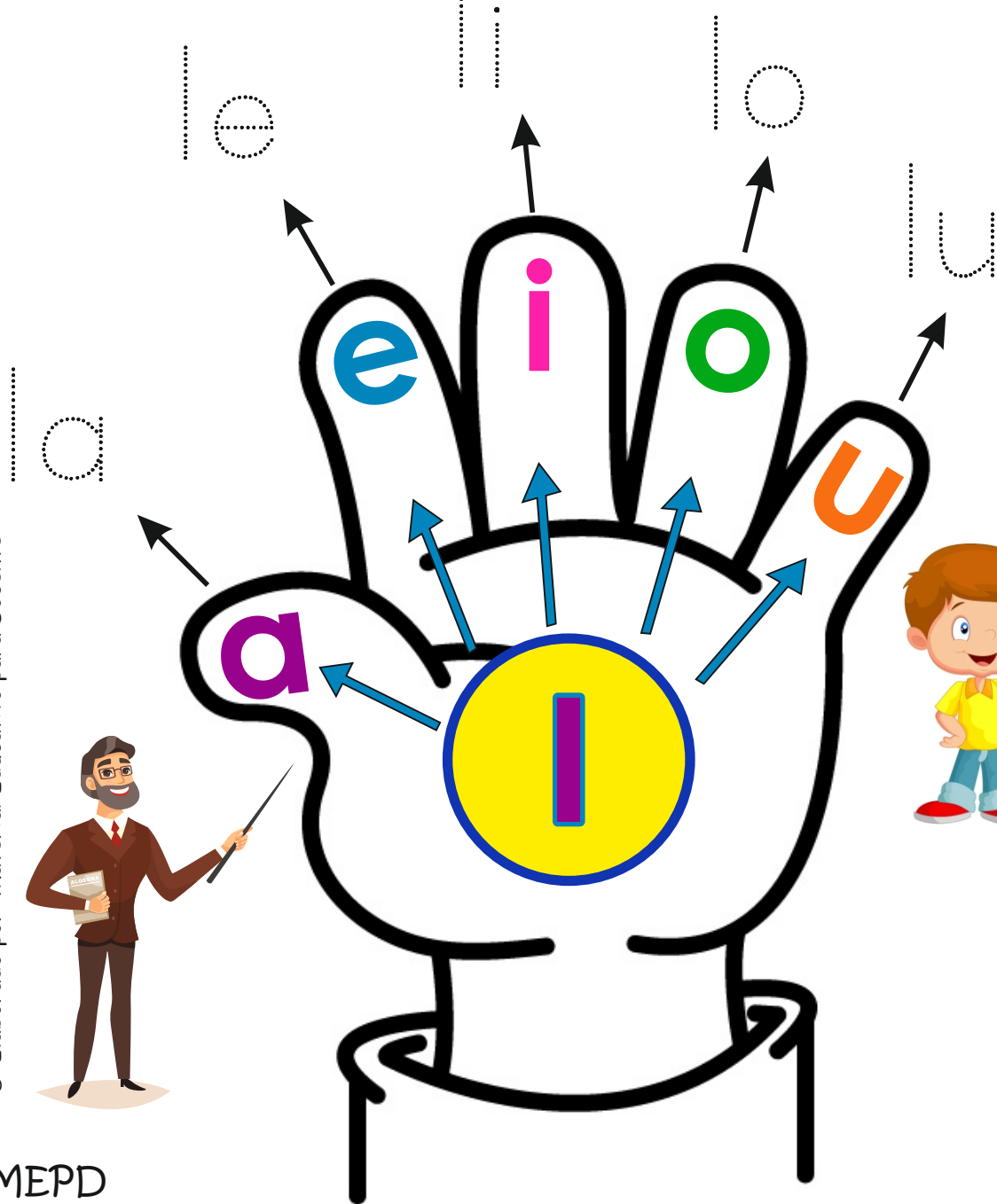
**e** =

**i** =

**o** =

**u** =

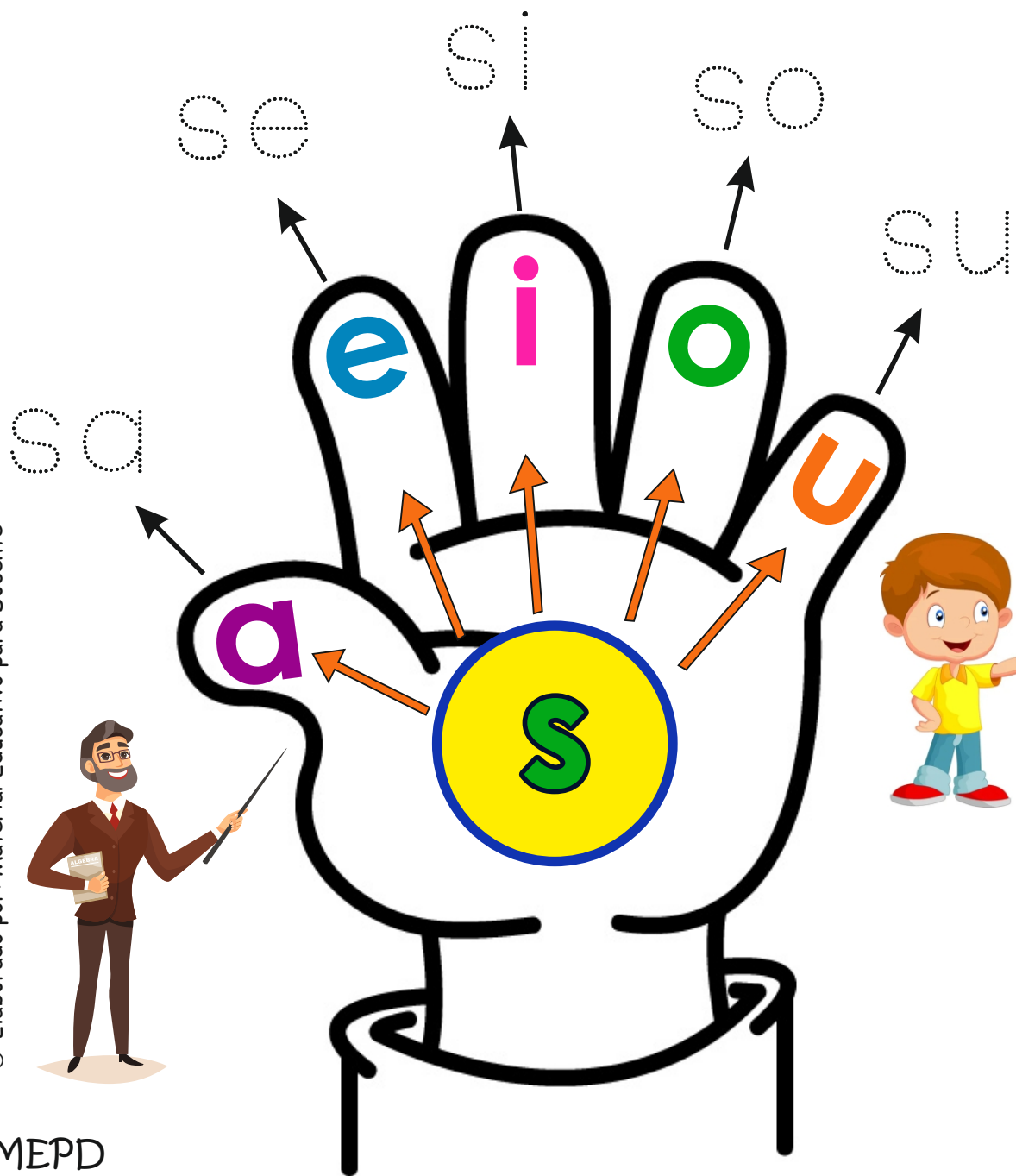
Repasa y completa las sílabas



A purple vertical bar is on the left. Five arrows point from it to the letters 'a', 'e', 'i', 'o', and 'u' in different colors. Each letter is followed by an equals sign and a dotted box for completion.

a	=	
e	=	
i	=	
o	=	
u	=	

Repasa y completa las sílabas



Syllable completion exercise:

- a =
- e =
- i =
- o =
- u =

Repasa y completa las sílabas

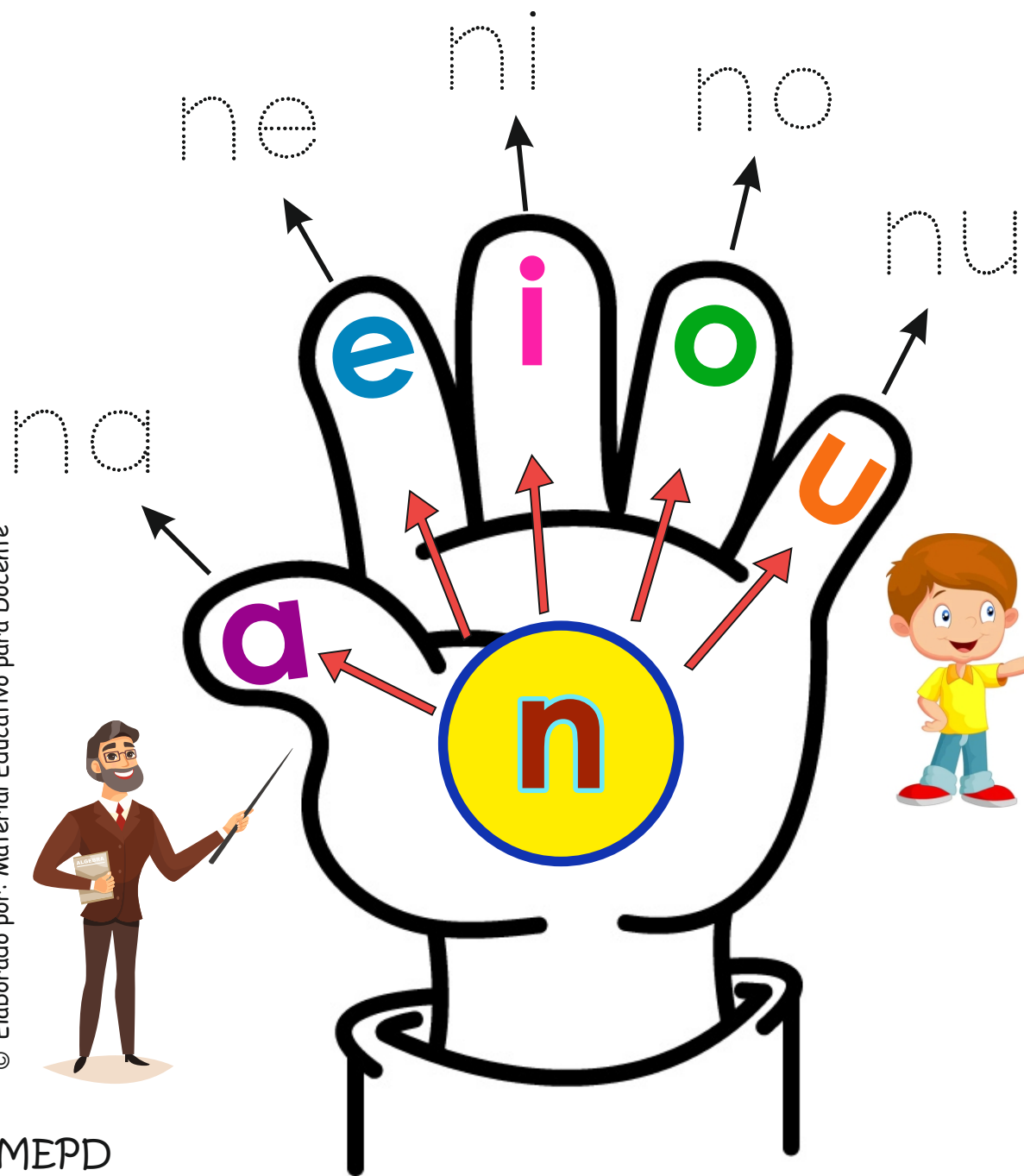


A dashed blue box containing a central letter 'd' with arrows pointing to five rows of syllable completion exercises:

- a =
- e =
- i =
- o =
- u =

© Elaborado por: Material Educativo para Docente

Repasa y completa las sílabas



n = a =

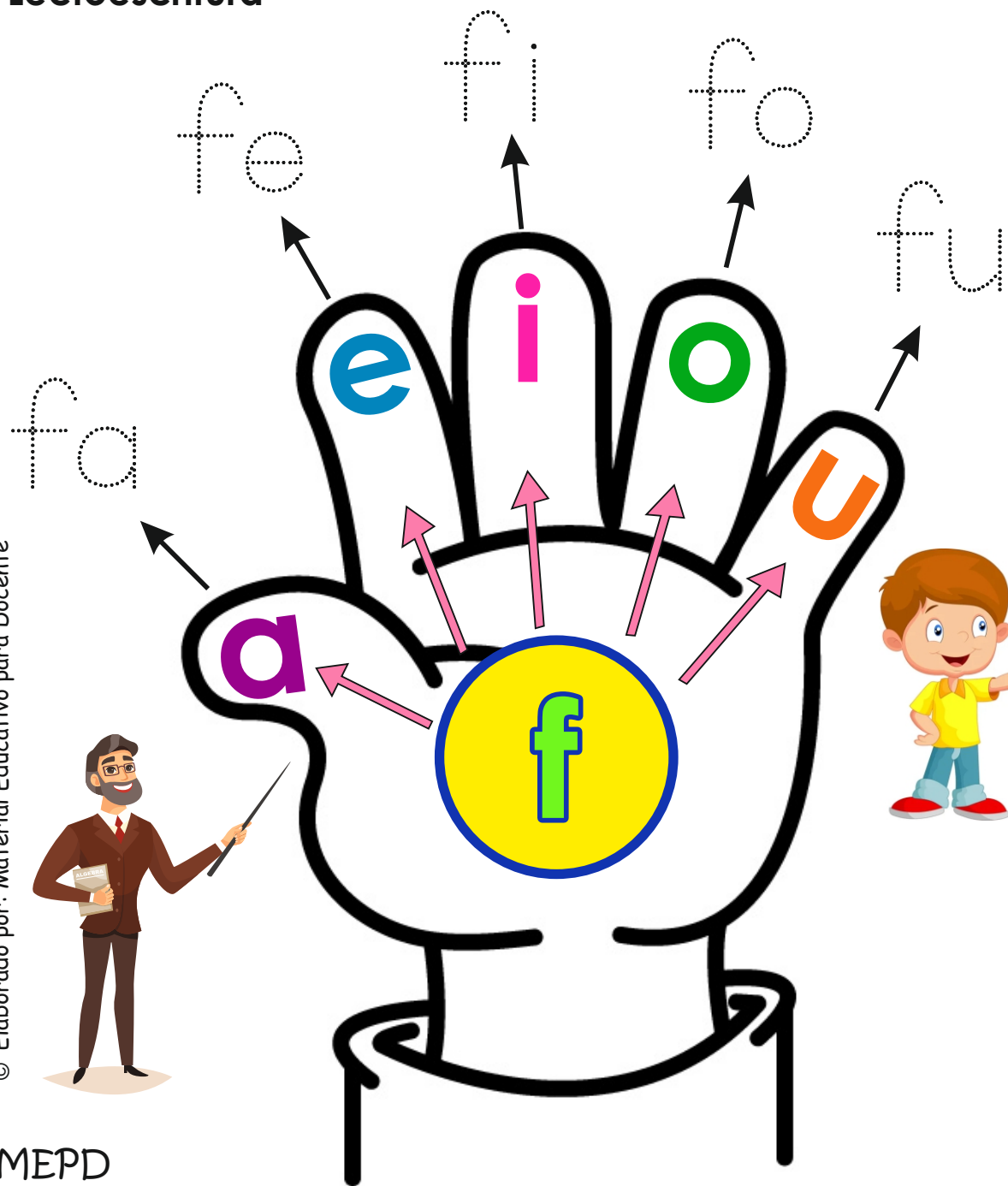
n = e =

n = i =

n = o =

n = u =

Repasa y completa las sílabas



f = a =

f = e =

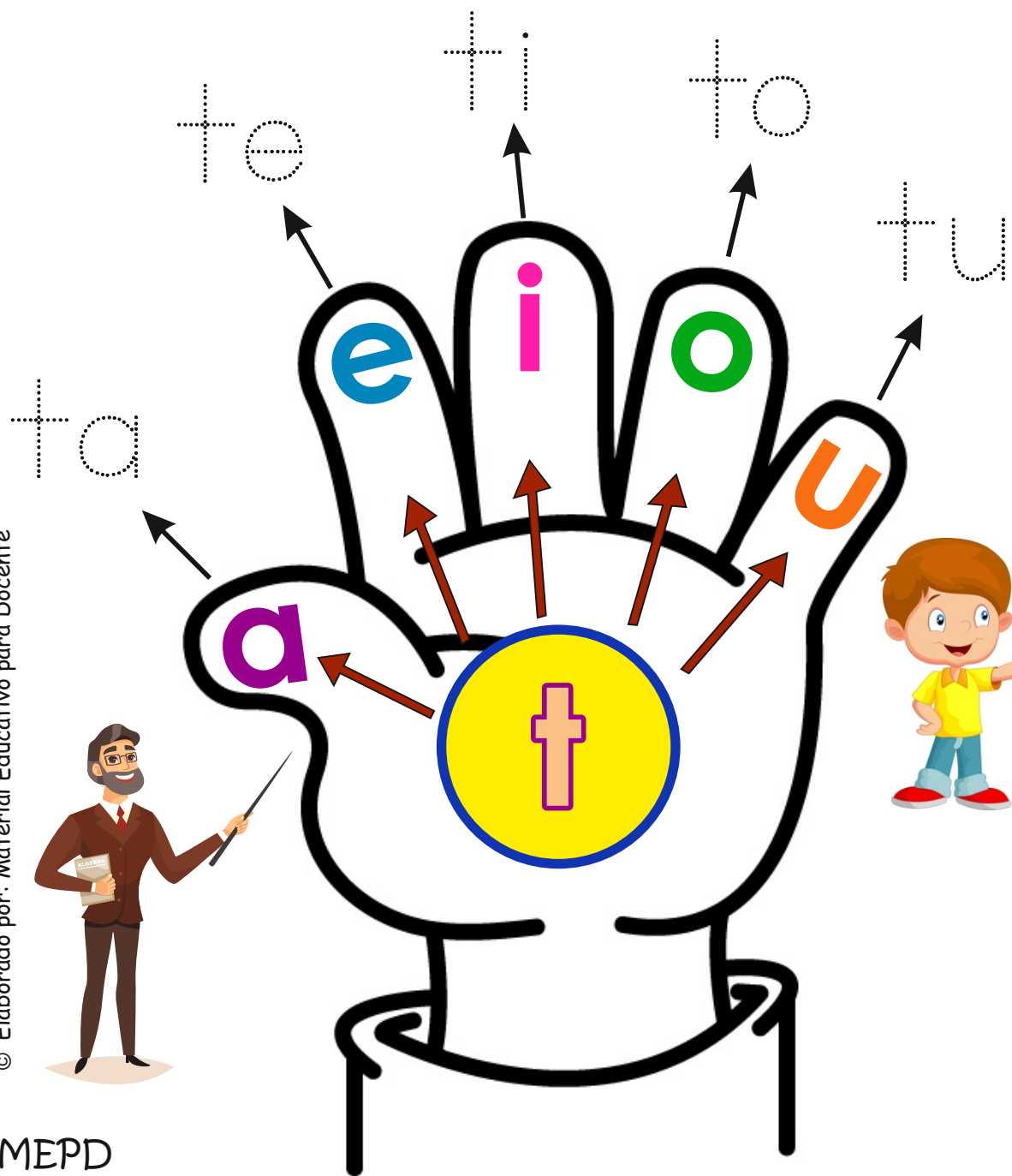
f = i =

f = o =

f = u =



Repasa y completa las sílabas



a =

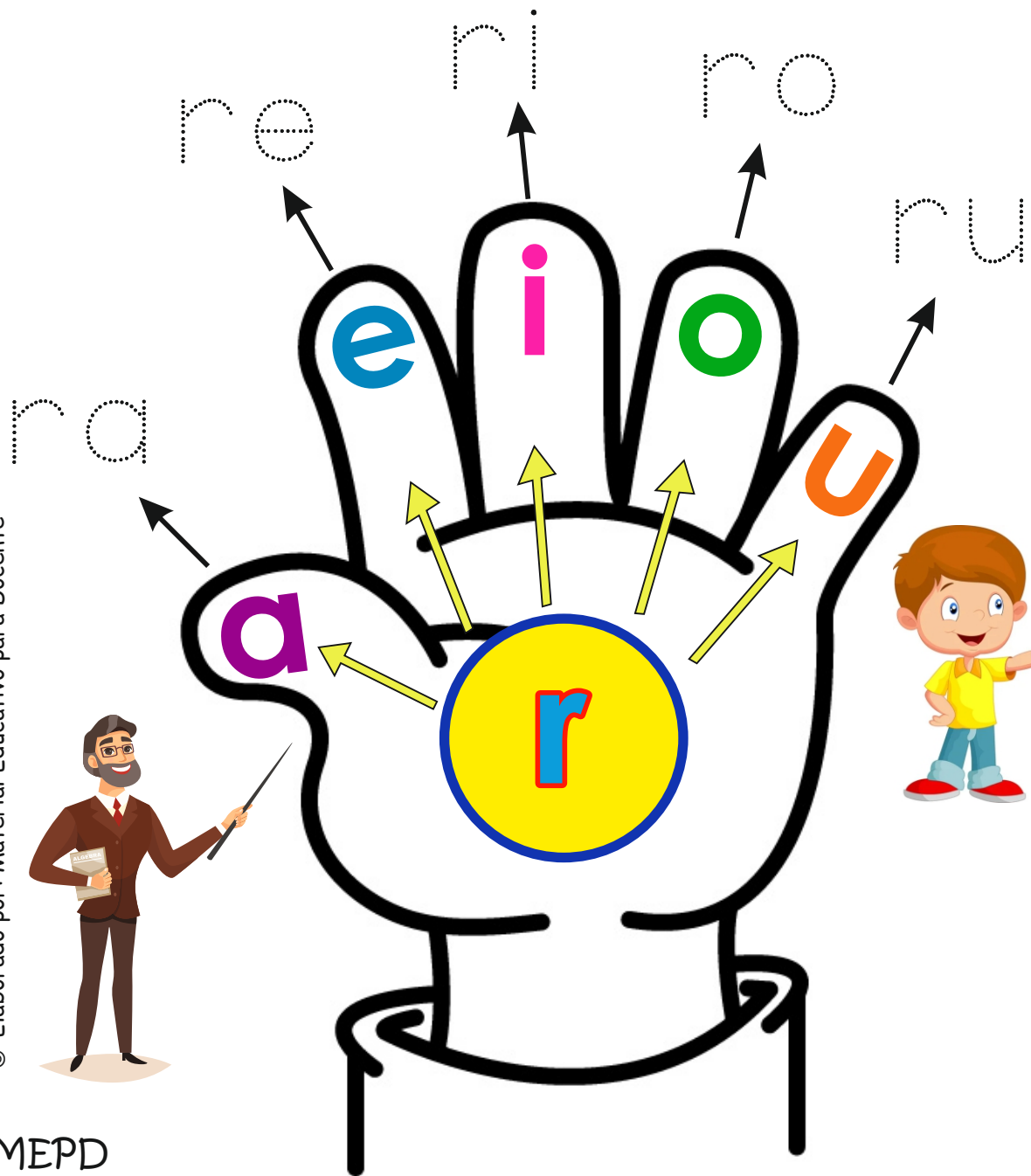
e =

i =

o =

u =

Repasa y completa las sílabas



a =

e =

i =

o =

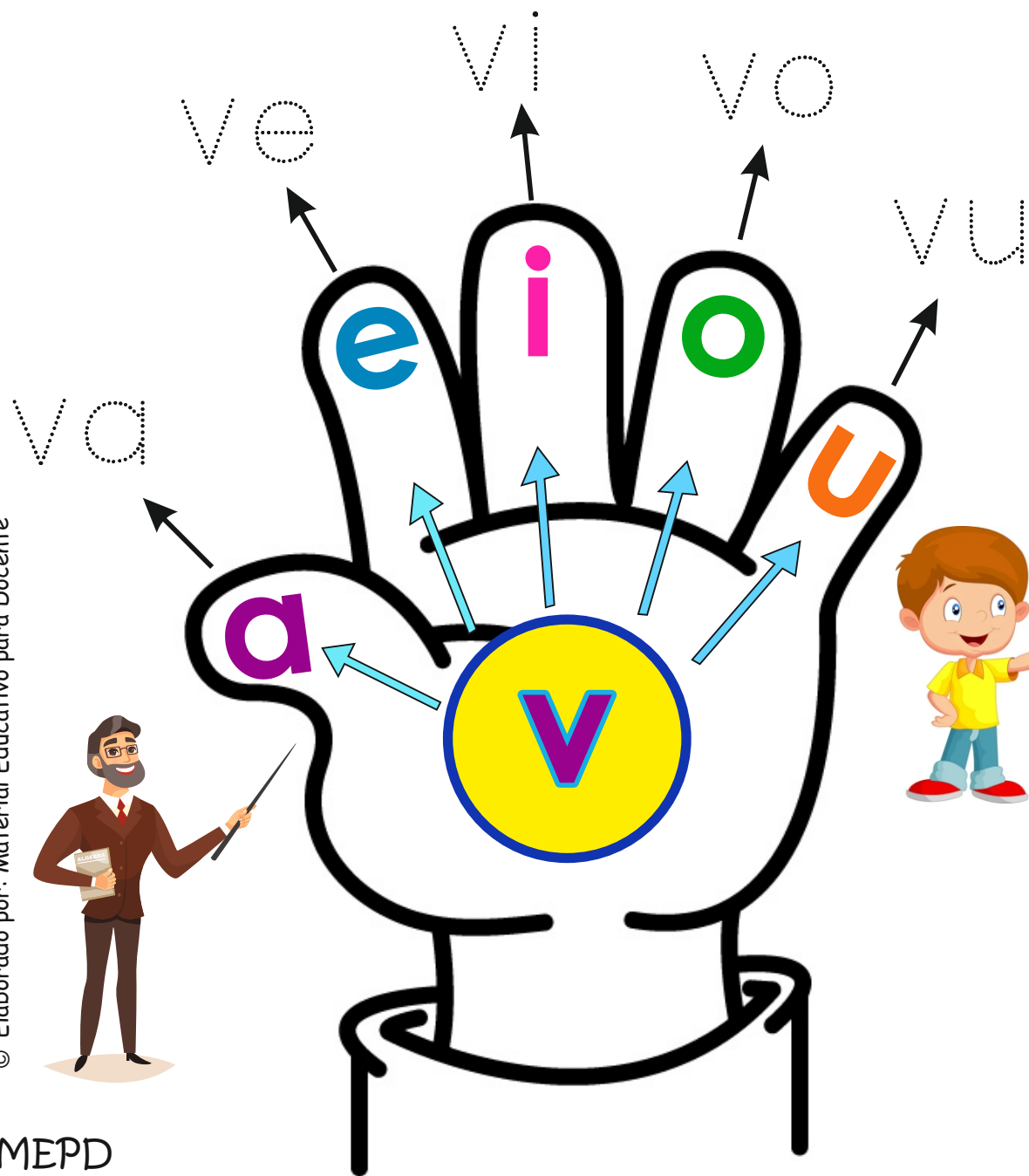
u =

Repasa y completa las sílabas

ba be bi bo bu

b = a =  
e =  
i =  
o =  
u =

Repasa y completa las sílabas



v a =

v e =

v i =

v o =

v u =

Repasa y completa las sílabas



A dashed box containing a green 'g' with arrows pointing to 'a', 'e', 'i', 'o', and 'u'. Each vowel is followed by an equals sign and a dotted box for completion.

a =

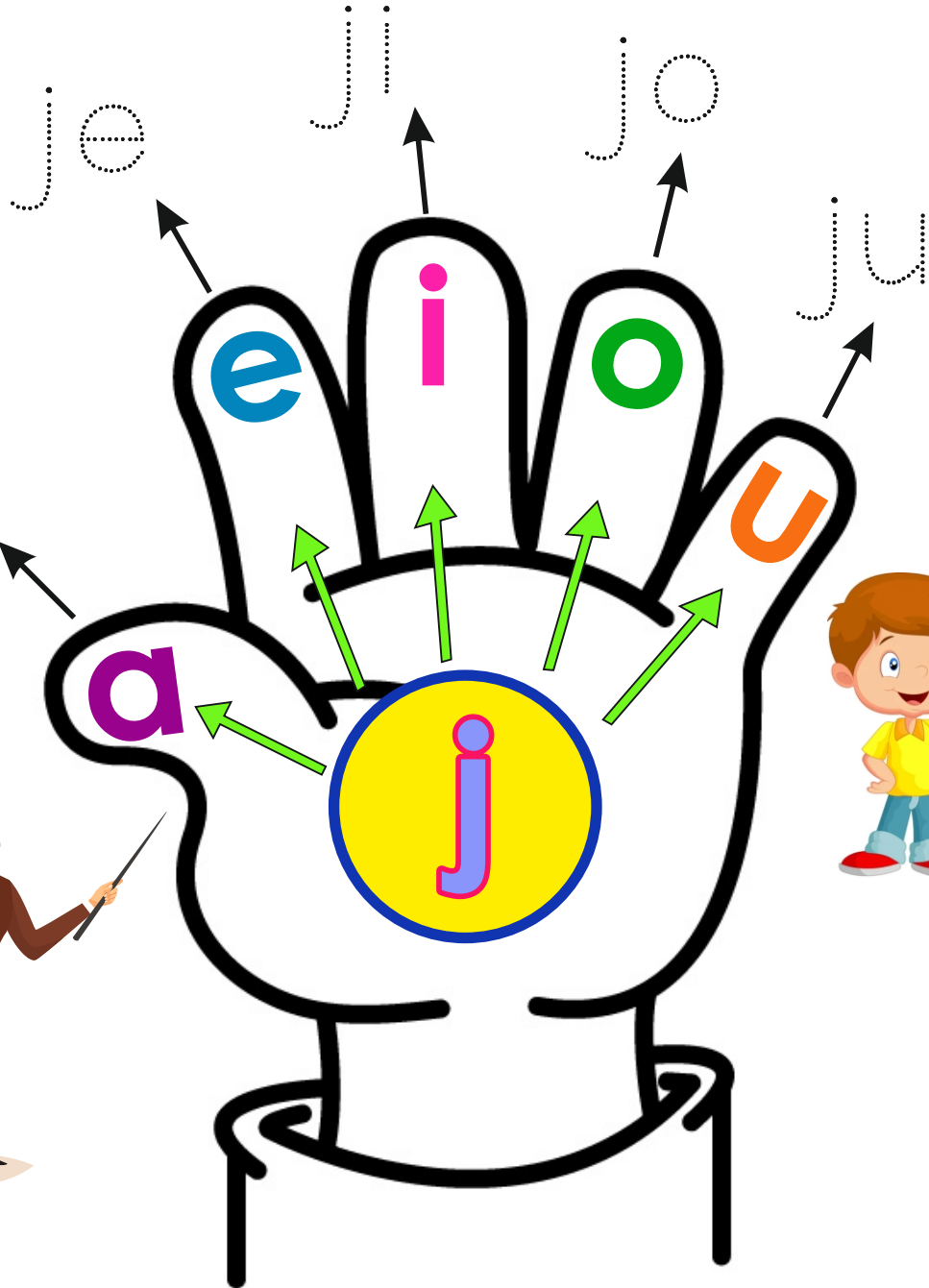
e =

i =

o =

u =

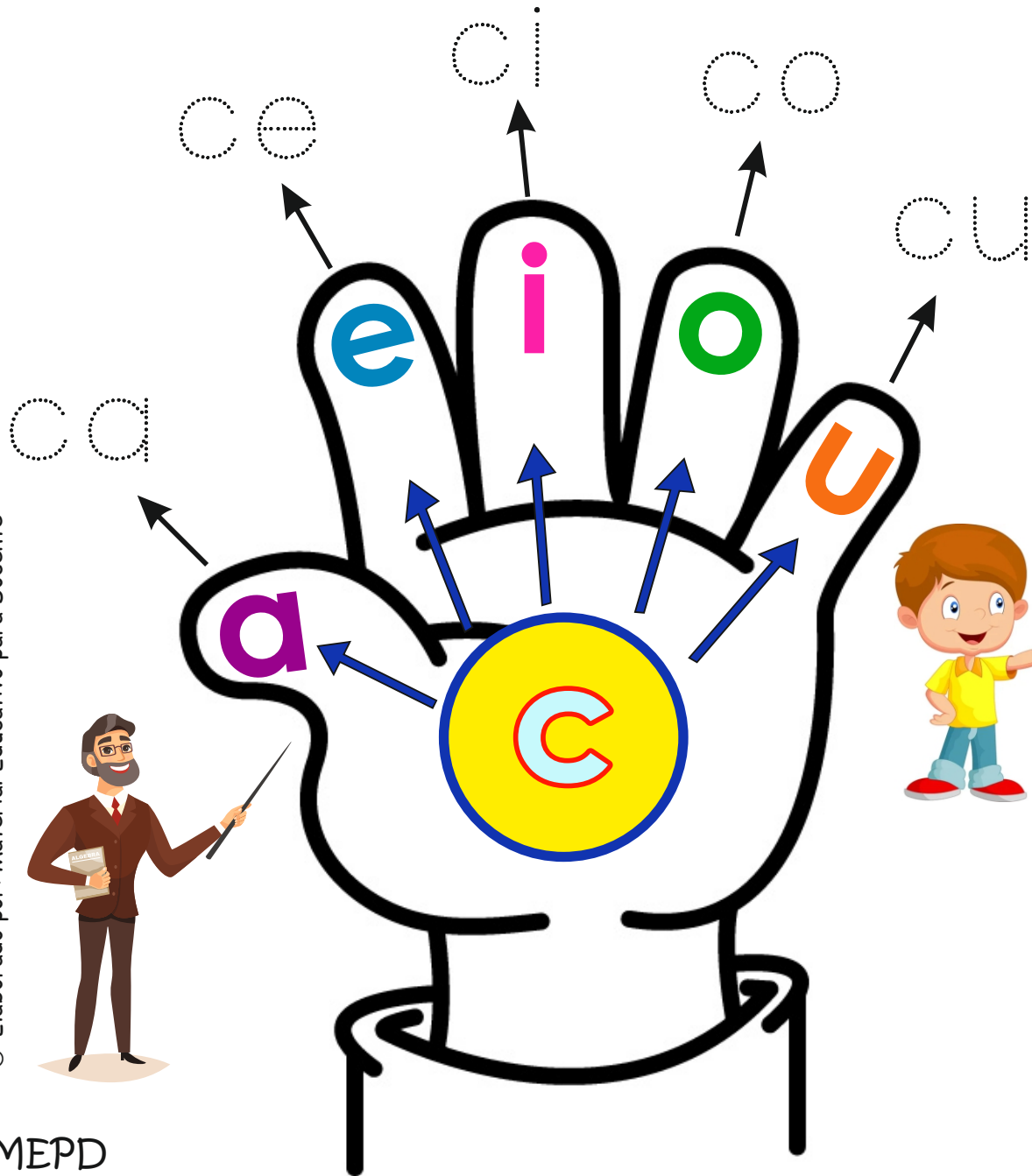
Repasa y completa las sílabas



Handwriting practice section for the syllable 'ja'. It features a large 'j' on the left with arrows pointing to four rows of boxes. Each row contains a vowel followed by an equals sign and a dashed box for writing.

a	=	<input type="text"/>
e	=	<input type="text"/>
i	=	<input type="text"/>
o	=	<input type="text"/>
u	=	<input type="text"/>

Repasa y completa las sílabas



A dashed box containing a large letter 'C' with arrows pointing to 'a', 'e', 'i', 'o', and 'u'. Each letter is followed by an equals sign and a dotted box for completion.

a =

e =

i =

o =

u =

Repasa y completa las sílabas



a =

e =

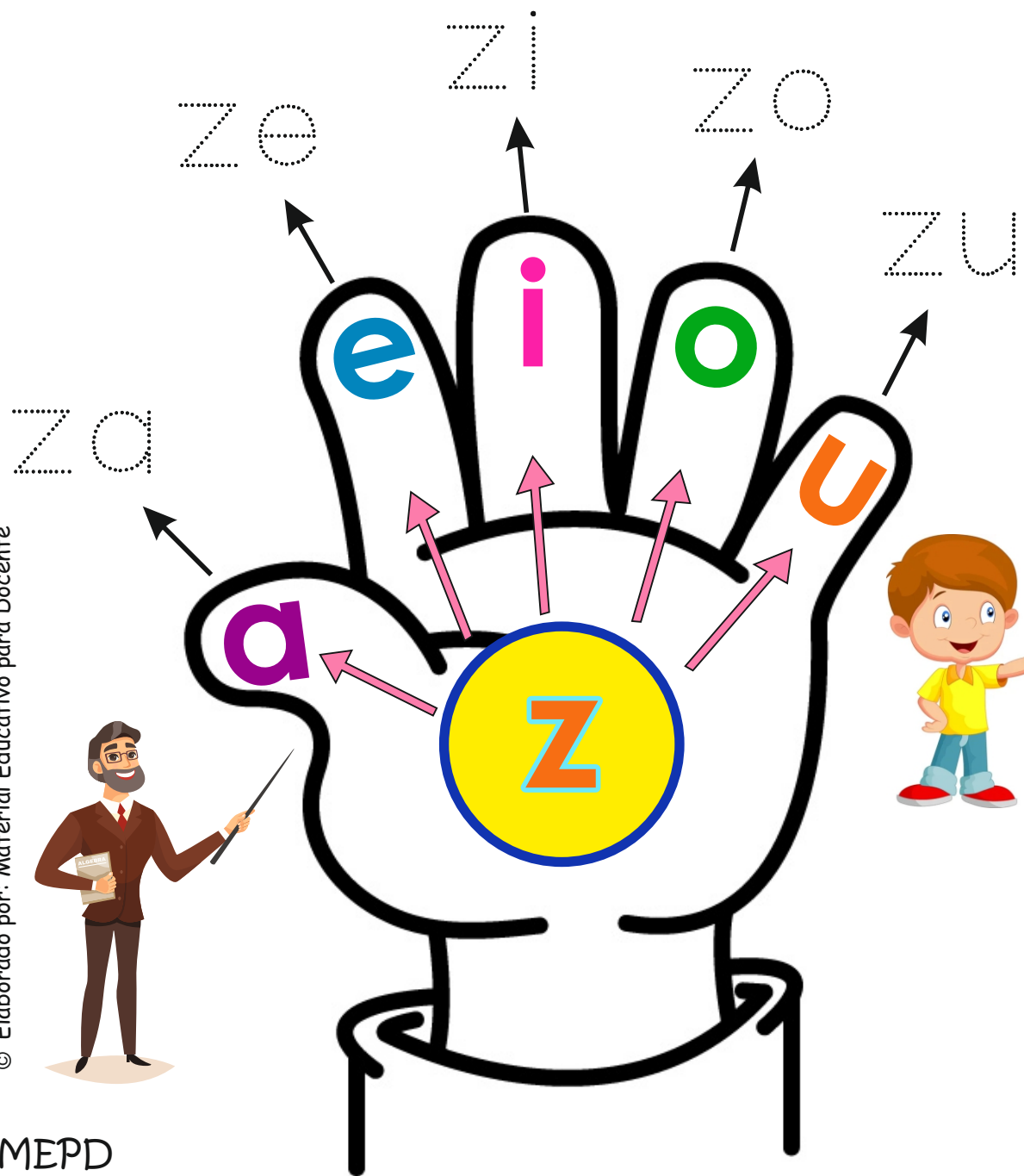
i =

o =

u =



Repasa y completa las sílabas



a = [ ]

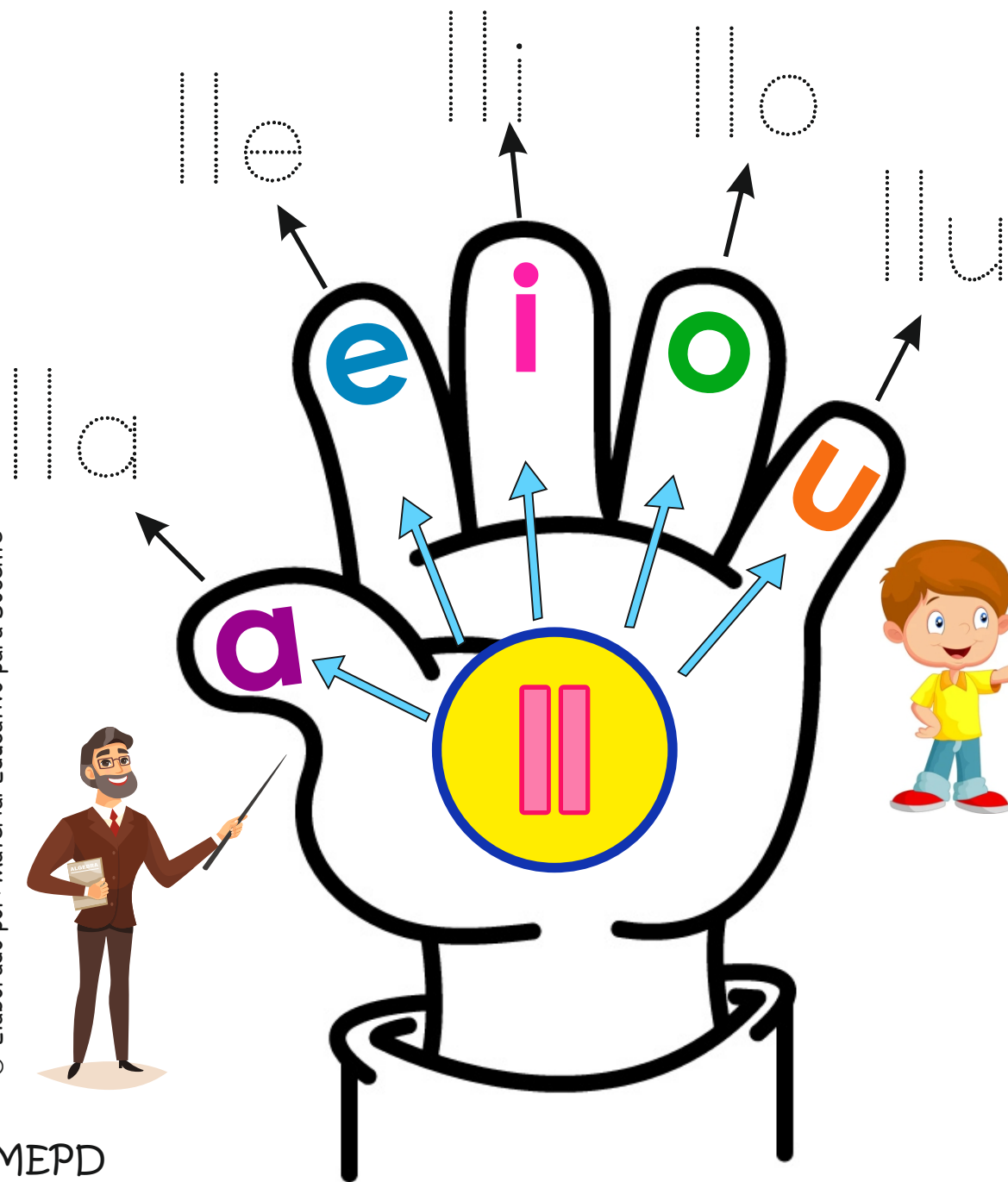
e = [ ]

i = [ ]

o = [ ]

u = [ ]

Repasa y completa las sílabas



a = [ ]

e = [ ]

i = [ ]

o = [ ]

u = [ ]